



WALL RAPTURE

Finest Industrial Design



Mineral & Metallic Design Wallpapers.
Made in Germany.

REAL HANDCRAFT...

The benchmark for time-saving and efficient construction is in the craft and planning sector higher than ever before: Our products meet these requirements without neglecting quality.

Who are we?

As a young craft enterprise, Wall Rapture Germany GmbH has set itself the goal of simplifying the processing of **wall plaster in the form of wallpaper** in a format of **300x100 cm**. We promise a unique industrial look for every wall: Our innovative wall coating system on wallpapers not only looks authentic, but also impresses with its **real feel**. Our surfaces come from a manufacture in East Germany and 100% handmade.

What are our products?

The industrial character has many facets, which is why the thin-layer surface coating is available as wallpaper in different versions: **Standard Concrete, Vintage Concrete, Rust Concrete, Structure and Rust Standard**. We are also constantly working on new ideas for spatula techniques. Our mineral surfaces can be produced in any desired color. Also our wallpapers can be transformed into unique eye-catchers with glazes and various creative design techniques without losing the concrete structure.

Where can our products be used?

Due to the **simple, fast and clean processing**, our surfaces are perfectly suitable for the **interior design** of shops, bars and other public facilities. But also pieces of furniture, exhibition stands or entire living rooms can easily be clad with our surfaces and inspire the viewer with their look and feel. Our products can be installed quickly on almost all load-bearing surfaces: **solid optics with a light construction**.

Our product features:

- o Authentic, standardized spatula techniques surfaces
- o Mineral, over 70% rock material
- o 100% handmade in Germany
- o BPA free, odor free
- o Real look and feel
- o Simple and quick processing, also on curves and edges
- o Breathable
- o Thin, light and flexible
- o Holds on all stable surfaces
- o Cheaper and faster transport
- o No construction dust and noise

... FROM PRODUCTION TO PROJECT IMPLEMENTATION.



INDUSTRIAL
DESIGN AND FEELING
FOR YOUR WALL AND
OBJECTS

wr. CONCRETE

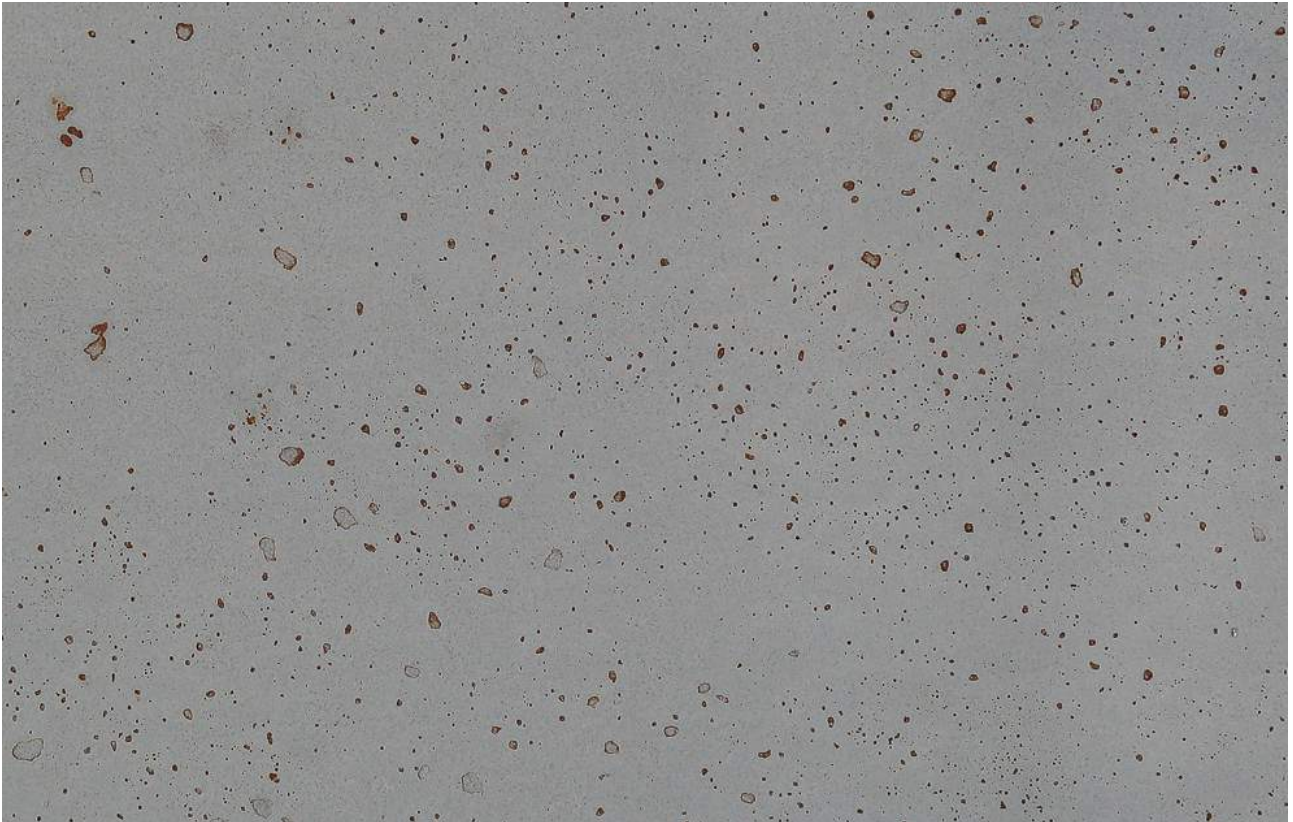


CONCRETE STANDARD / ITEM NO. 100



CONCRETE STANDARD Anthracite / ITEM NO. 100-5





RUST CONCRETE / ITEM NO. 140



RUST CONCRETE Anthracite / ITEM NO. 140-5



VINTAGE CONCRETE / ITEM NO. 150



VINTAGE CONCRETE Anthracite / ITEM NO. 150-5



WIR. STRUCTURE



STRUCTURE "LINES" / ITEM NO. 170



STRUCTURE "CLAY" / ITEM NO. 175

wr. RUST



RUST STANDARD / ITEM NO. 500



IT HAS NEVER BEEN **SO EASY** ...



ROLLING

The customer receives our **300x100cm** rolls rolled up in a box packaged, **including glue, modeling grout.**



CUTTING

The material can be cut to the **desired size** on a flat surface with a **craft knife** without any problems.



GLUEING

The glue supplied is applied in a **thin layer** to the neutral, non-absorbent carrier from top to bottom. The membrane is then applied quickly. The **joints** between the individual strips can be **designed individually** with the joint compound.

EVERY WALL A UNIQUE WORK OF ART

Our surfaces can be ideally protected against the penetration and escape of substances with our **sealing** and are therefore **water and scratch resistant**.

In addition, our mineral surfaces can be individually designed with **glazes**, so each wall becomes **unique** and receives the individual signature of the processor. With our surfaces, any **objects and pieces of furniture** can be turned into real eye-catchers. The coated surfaces look like real **concrete or corten bodies**.

COLOURED

Do you have a special color requirement? Our mineral surfaces can be produced in the **color of your choice**.





MOTIF OR LOGO

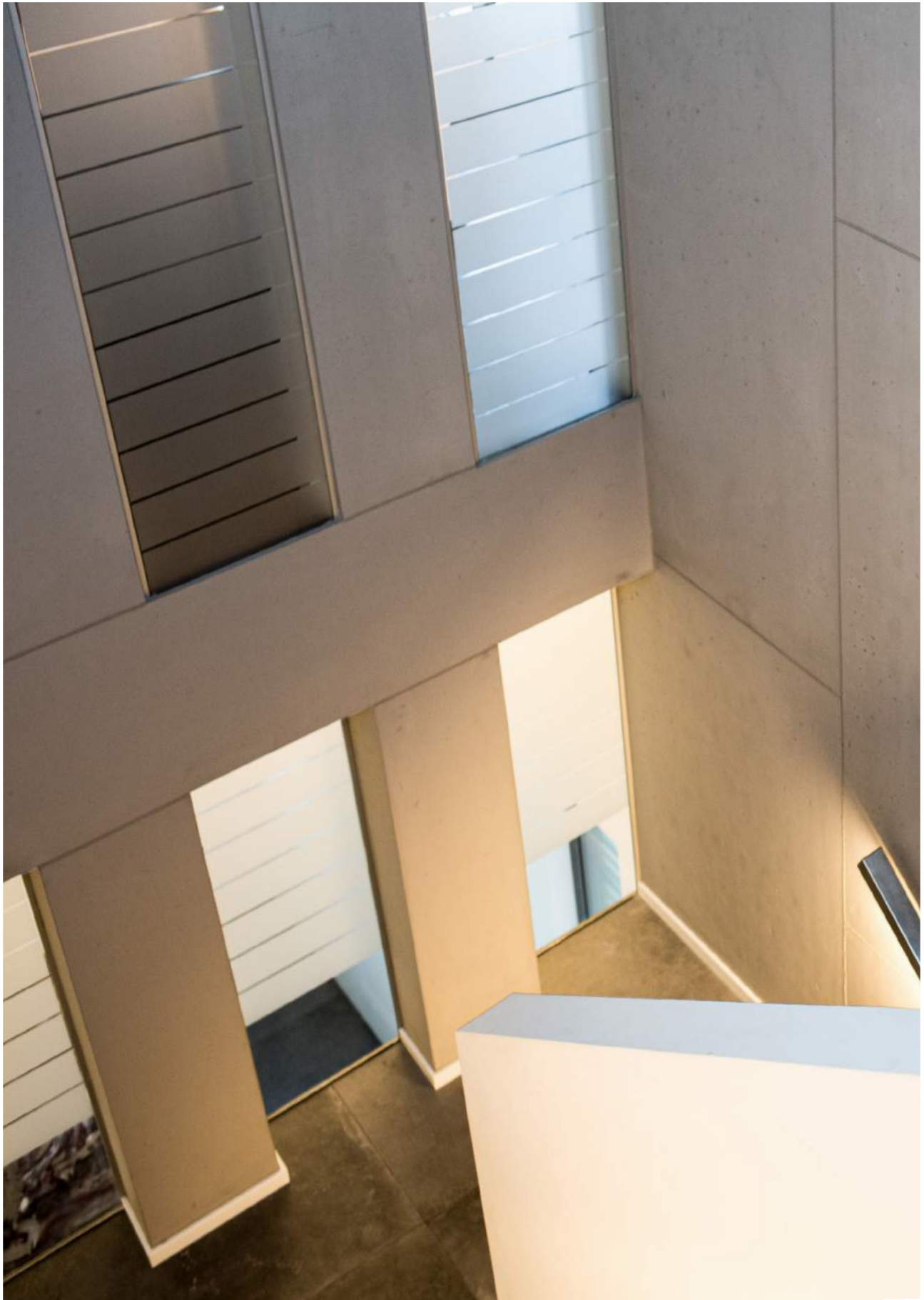
Our surfaces can be printed with your **logo** or a **picture motif**. This gives your wall or counter a very individual touch and becomes a unique **eye-catcher**.







REFERENCES



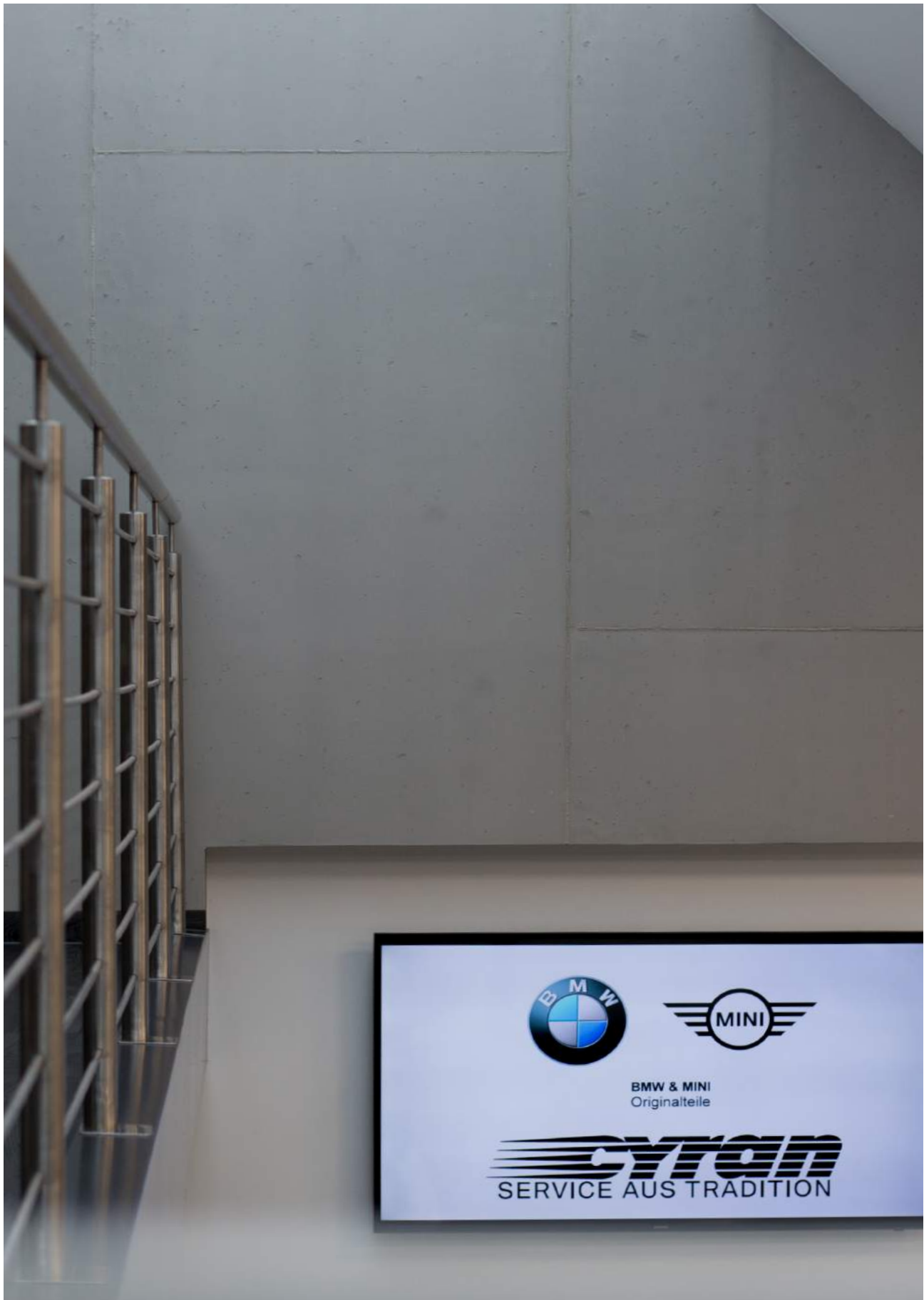


















www.wall-rapture.de



WALL RAPTURE GERMANY GMBH
Hoyerswerdaer Str. 42
02625 Bautzen

E-Mail: info@wall-rapture.de
Tel.: +49 3591 593550